

Provided by



*Serving Hood, Johnson, and
Somerville counties*

Entries to this list are based upon research and confirmed findings provided by the Rio Brazos Master Naturalist. Visit us at <http://www.riobrazosmn.org>.

A.N.C. MISSION STATEMENT

The Acton Nature Center of Hood County will promote a recreational and educational venue for nature enthusiasts of all ages.

The A.N.C. is located at 6900 Smoky Hill Ct., Granbury, TX, 76049. You may call (817)326-6005 or email us at ANC.andrea@yahoo.com for more information.

www.actonnaturecenter.org

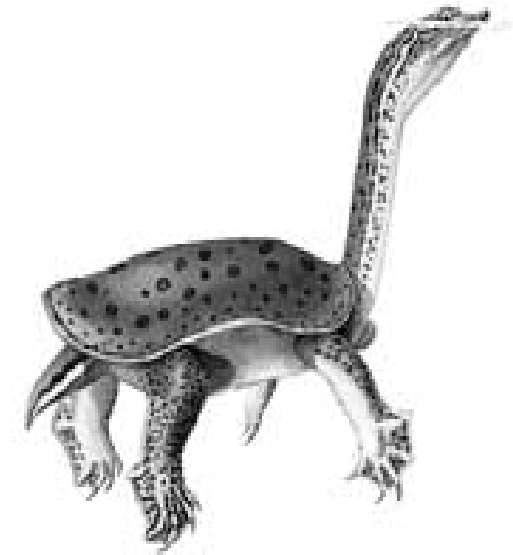
The Rio Brazos Chapter of Texas Master Naturalist serves the counties of Hood, Johnson, and Somervell sponsored by the Texas Parks and Wildlife (TPW) and the Texas Cooperative Extension (TCE). Our organization was established in the Spring 2005, and we are currently staffed with about 30 members. As with the many other state-wide Master Naturalist chapters, we are a group of citizen volunteers committed to the beneficial management of our natural resources and natural areas through volunteer service and educational outreach. Detailed information about the program is available at the Texas Master Naturalist official website <http://masternaturalist.tamu.edu/>.

If you are interested in joining our chapter or you are seeking our assistance with an environmental activity that we might be able to support, please contact us. Our officers and contact info are listed in the Contact Link at <http://www.riobrazosmn.org>.



**Acton
Nature
Center**

Checklist of Amphibians & Turtles



www.actonnaturecenter.org

Acton Nature Center
CHECKLIST KEY

S = sighted at the Nature Center
W = sighted within 10 miles of the
Nature Center
NS = has not been sighted
☐ = Mark for Personal sightings

SPECIES KEY

Salamanders

Smallmouth Salamander W ☐
Ambystoma texanum

True Toads

Green Toad NS ☐
Bufo debilis
Red Spotted Toad NS ☐
Bufo punctatus
Texas Toad W ☐
Bufo speciosus
Gulf Coast Toad S ☐
Bufo valliceps
Woodhouse's Toad S ☐
Bufo woodhousii

Spadefoot Toads

Couch's Spadefoot NS ☐
Scaphiopus couchi
Hurter's Spadefoot NS
Scaphiopus hurteri

SPECIES KEY

Narrowmouth Toads

Great Plains Narrowmouth Toad S ☐
Gastrophryne olivacea

Tree Frogs

Cope's Gray Tree Frog W ☐
Hyla chrysoscelis
Gray Tree Frog S ☐
Hyla versicolor

Chorus Frogs

Spotted Chorus Frog W ☐
Pseudacris clarki
Strecker's Chorus Frog S ☐
Pseudacris streckeri

True Frogs

Plains Leopard Frog S ☐
Rana blairi
Bull Frog S ☐
Rana catesbeiana
Southern Leopard Frog S ☐
Rana sphenoccephala



SPECIES KEY

Box Turtles

Ornate Box Turtle S ☐
Terrapene ornata

River Cooters & Sliders

Eastern River Cooter NS ☐
Pseudemys concinna
Texas River Cooter W ☐
Pseudemys texana
Red-eared Slider W ☐
Trachemys scripta

Mud Turtles

Yellow Mud Turtle W ☐
Kinosternon flavescens
Eastern Mud Turtle NS ☐
Kinosternon subrubrum

Softshell Turtles

Smooth Softshell W ☐
Apalone mutica
Spiny Softshell W ☐
Apalone spinifera

Snapping Turtles

Common Snapping Turtle W ☐
Chelydra serpentina